

Technical Information

AMS434-160ASC/4,3T/C



Operating data

Flow 250 US g.p.m.
 Head 20 ft
 Shaft power P2
 Pump efficiency 31.9 %
 Required pump NPSH
 Pumpe type Single head pump
 No. of pumps 1
 Fluid Water, clean

Pump

Pump Code AMS434-160ASC/4,3T/C
 Impeller Single channel impeller
 Impeller size 6.2992 inch
 Solid size 3 inch
 Discharge port 4" ANSI
 Suction port DN100

Motor

Rated voltage 230/ 460V
 Frequency 60 Hz Hz
 Rated power P2 4.3 hp
 Rated speed 1750 rpm
 Number of poles 4
 Efficiency 85 % %
 Rated current 11 / 5,5A
 Degree of protection IP 68

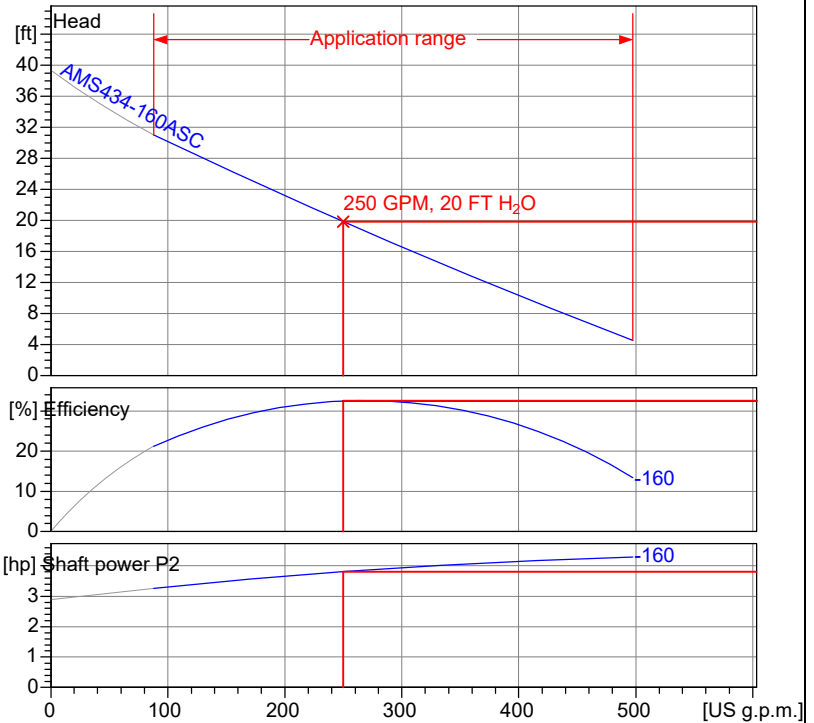
Materials

Motor housing Cast Iron ASTM A48;Cl.40B
 Pump housing Cast Iron ASTM A48;Cl.40B
 Impeller Cast Iron ASTM A48;Cl.40B
 Wear ring Bronze ASTM B505; C93200
 Motor shaft AISI 430 F Stainless Steel

Bolts AISI 304 Stainless Steel
 Elastomeres Nitrile Rubber

Mechanical seal on motor side SiC / SiC
 Mechanical seal on medium side SiC / SiC
 Lower Bearing Double row angular ball bearing
 Upper Bearing Deep Groove Ball Bearing

Testnorm: HI Standard Sect. 1



Wet well installation with coupling kit (T, 140...190)
 Dimensions in mm

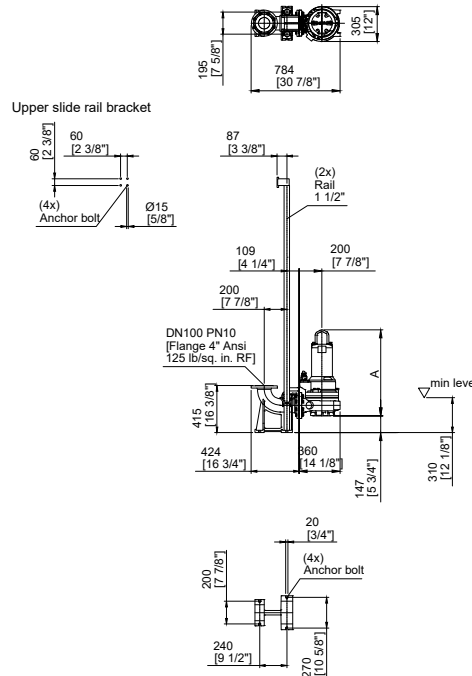


Table Dimensions (inch)

A	26.969
---	--------

Performance Curve

AMS434-160ASC/4,3T/C



Impeller

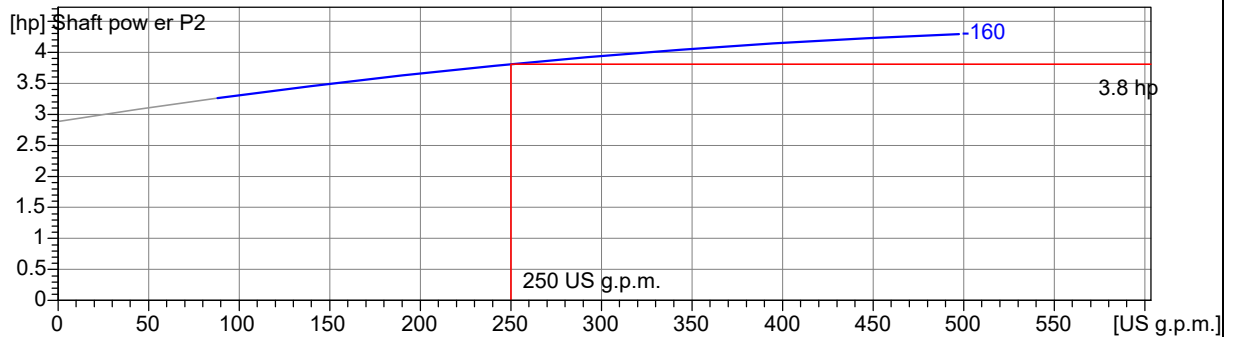
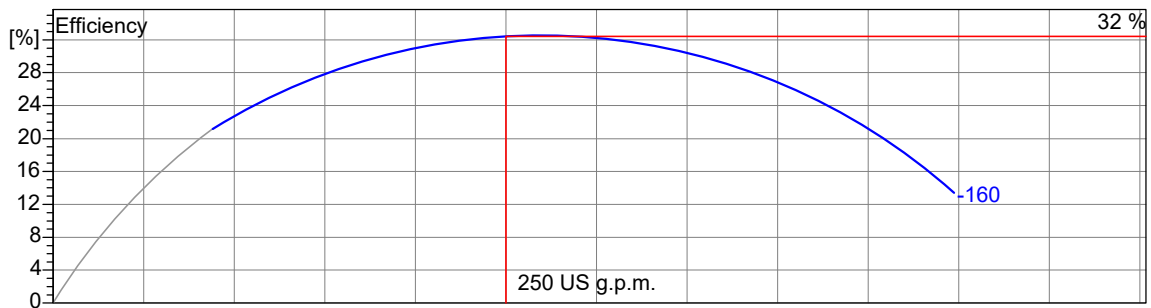
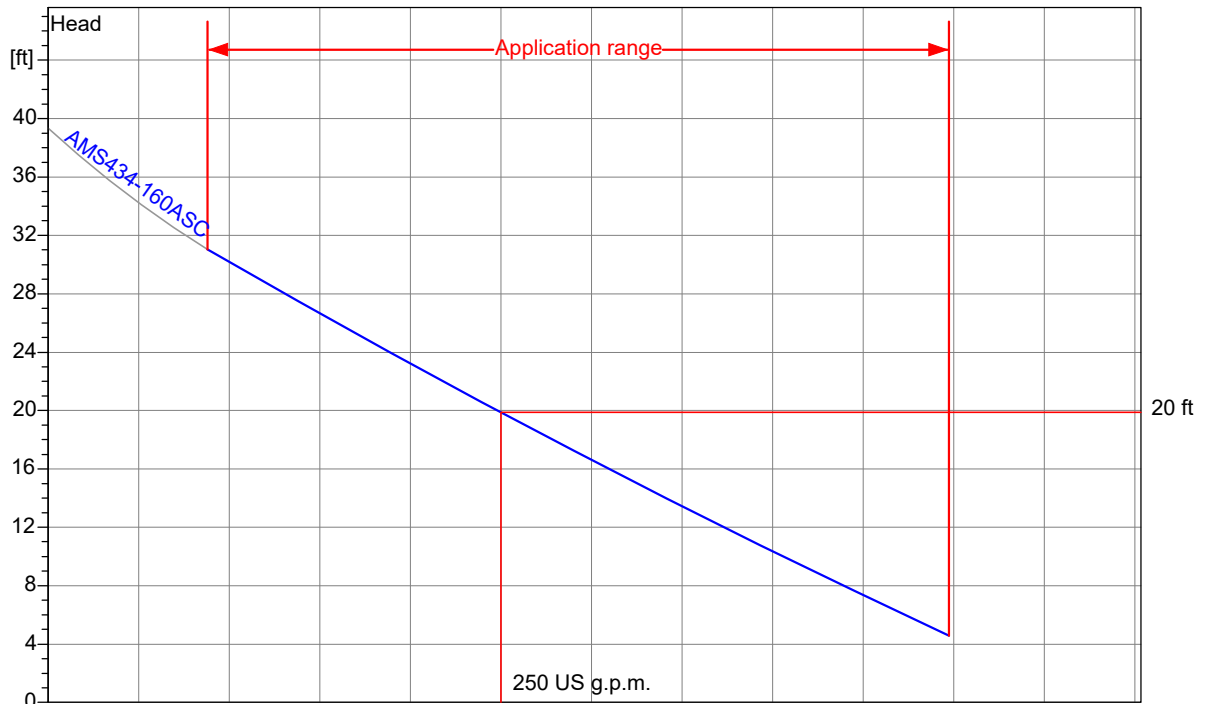
Impeller type: Single channel impeller	Solid size 3 inch	Ø:	Max. Ø: 7 inch	Min. Ø: 5.5118 inch	Sel. Ø: 6.2992 inch
---	----------------------	----	-------------------	------------------------	------------------------

Operating data

Speed: 1750 rpm	Frequency: 60 Hz	Duty point: Q = 250 US g.p.m. H = 20 ft	Shaft power P2: 3.8 hp	Discharge port: 4" ANSI
---------------------------	----------------------------	---	----------------------------------	-----------------------------------

Power data referred to:
Water, clean [100%]; 68°F; 62.322lb/f³; 1.0818E-5f t²/s

Testnorm: HI Standard Sect. 1



Project	Project no.:	Created by :	Page: 2	Date: 7/17/2025
---------	--------------	--------------	-------------------	---------------------------

Dimensions

AMS434-160ASC/4,3T/C



Wet well installation with coupling kit (T, 140...190)

Dimensions in mm [in

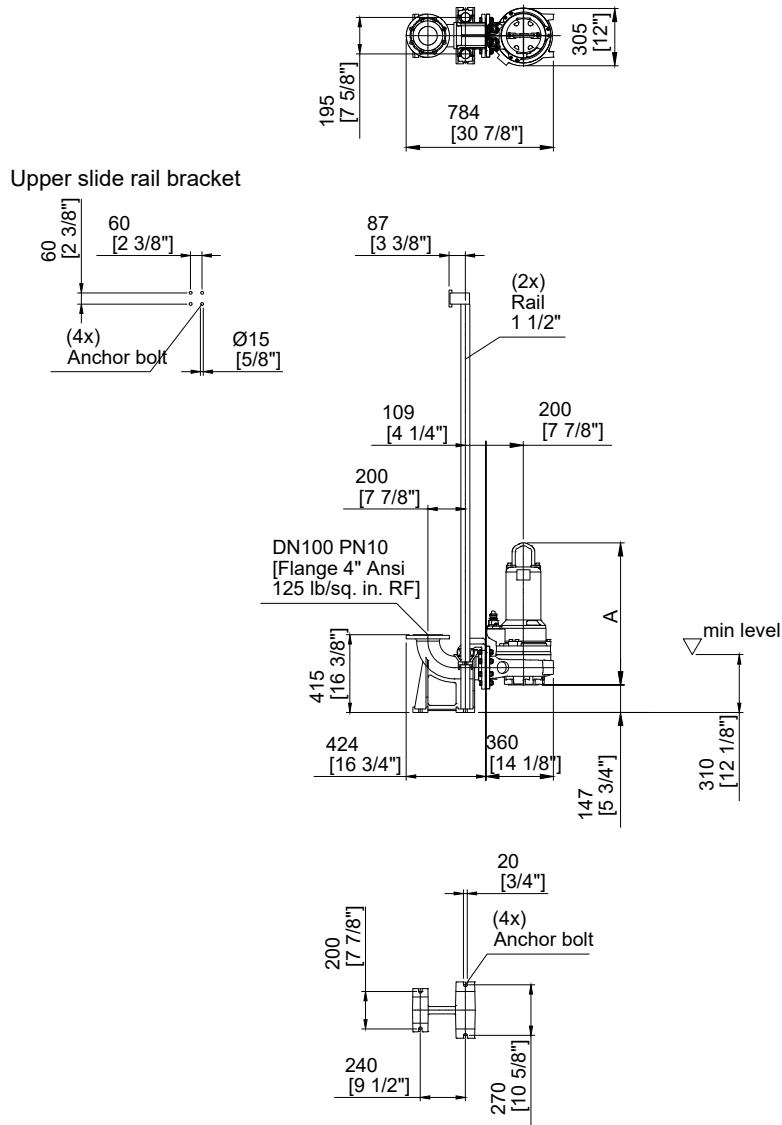


Table Dimensions

(inch)

A	26.969
---	--------

min level = Minimum fluid level f or intermittent operation (S3)

Project

Project no.:

Created by :

Page:
3

Date:
7/17/2025

Technical Data

AMS434-160ASC/4,3T/C



Operating data

Flow	250 US g.p.m.	Head	20 ft	ft
Shaft power P2	3.8 hp	Geodetic head	0	ft
Pump efficiency	32 %	Required pump NPSH		ft
Pumpe type	Single head pump	No. of pumps	1	
Fluid	Water, clean	Temperature	20	°F
Density	998.3 lb/ft ³	Kin. viscosity	1.005	ft ² /s

Pump

Pump Code	AMS434-160ASC/4,3T/C	Speed	1750	rpm	
Suction port	DN100	Head	Max.	31.0	ft
Discharge port	4" ANSI		Min.	4.6	ft
Impeller type	Single channel impeller	Flow	Max.	497.5	US g.p.m.
Solid size	3 inch	Pump efficiency max.		32.8	%
Impeller Ø	6.3 inch	Required rated power max. P2		4.3	hp

Motor

Motor design	Submersible motor	Insulation class	H		
Motor name	AM173.5T/4/3	Degree of protection	IP 68		
Frequency	60 Hz	Temperature class	T3C		
Rated power P1	5.0 hp	NEMA code	F		
Rated power P2	4.3 hp	Explosion protection			
Rated speed	1750 rpm	Efficiency at % rated power	100%	85.0	%
Rated voltage	230 / 460 V 3~		75%	87.0	%
Rated current	11.0 / 5,5 A		50%	86.0	%
Starting current, direct starting	56.0 / 28 A	cos phi at % rated power	100%	0.86	
Starting current, star-delta	A		75%	0.80	
Starting mode	Directly		50%	0.71	
Power cable	10G1,5 / 14AWG-4+14AW	Control cable			
Type of power cable	H07RN8-F PLUS / RHW-2	Type of control cable			
Cable length	32.8 ft	Service factor	1.15		
Shaft seal	Mechanical seal on motor side	SiC / SiC			
	Mechanical seal on medium side	SiC / SiC			
Bearing	Lower Bearing	Double row angular ball bearing			
	Upper Bearing	Deep Groove Ball Bearing			
Remarks					

Materials / Weight

Motor housing	Cast Iron ASTM A48;Cl.40	Bolts	AISI 304 Stainless Steel		
Pump housing	Cast Iron ASTM A48;Cl.40	Elastomeres	Nitrile Rubber		
Impeller	Cast Iron ASTM A48;Cl.40				
Wear ring	Bronze ASTM B505; C932				
Motor shaft	AISI 430 F Stainless Steel				
Weight aggregat	On demand lb				

Project

Project no.:

Created by :

Page:

4

Date:

7/17/2025